

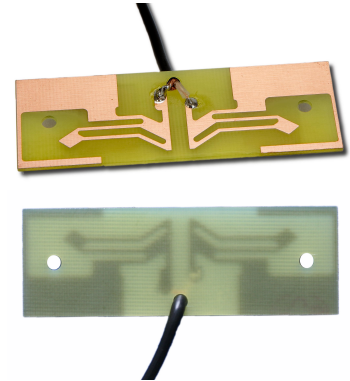
Product: QUADM0D-75-25

Product Order Code:

BM-02 RANGE

Embedded FR4 Adhesive Mounted Antenna

AMPS, GSM (2G, 3G), UMTS, WIFI, WLAN, BLUETOOTH



- Wideband PCB high performance antenna
- RoHS 2011/65/EU & RoHS3 (2015/863/EU compliant)
- Request samples for test & evaluation via enquiry@bloomice.com

Technical Data

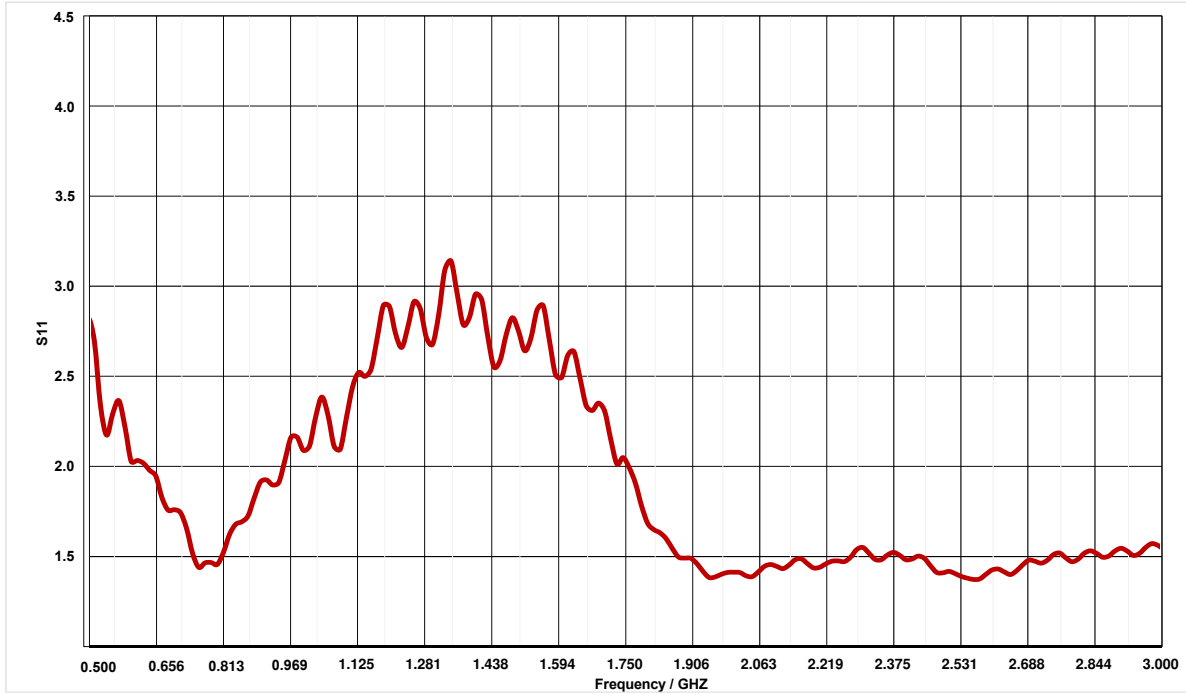
Dimensions	75mm x 25mm x 1.2mm (excluding self adhesive pad)	
Weight	12g (excluding cable and connector)	
Construction Materials	FR4 PCB UL94 V0 IPC4101	
Mounting Arrangement	3M Adhesive Pad Ground Plane Independent	
Temperature Range	-40 to +85 Degree C	
Protection Class	Embedded	
Cellular LTE / 2G / 3G		
Frequency Range	AMPS + GSM 900 GSM 1800 UMTS WIFI / WLAN / BLUETOOTH	824-900 MHz 1800 MHz 2100 MHz 2400-2500 MHz
Impedance	50 Ohm	
Polarisation	Horizontal	
Peak Gain	AMPS + GSM 900 GSM 1800 UMTS WIFI / WLAN / BLUETOOTH	@ 824-900 MHz; 0dBi @ 1800 MHz; 2.14dBi @ 2100 MHz; 2.14dBi @ 2400-2500 MHz; 2.14dBi
Radiation Pattern	Omni-Directional	
Max Power @ 30 Celsius	AMPS + GSM 900 GSM 1800 UMTS WIFI / WLAN / BLUETOOTH	25 Watts @ 824-900 MHz 25 Watts @ 1800 MHz 25 Watts @ 2100 MHz 25 Watts @ 2400-2500 MHz
Return loss (VSWR)	<2:1 (All Featured Bands)	
Radiator Type	Dipole	
Cable types Available	MICRO 0.81 / 1.13 / 1.37 / RG174 / RG178 / RG316	
Cable Length	According to customer specification	
Connector	According to customer specification	
Test & Measurement Conditions	300mm x 300mm x 2mm ABS / 100mm MICRO 1.13mm Diameter Cable / IPEX U.FL Cable	

dBi: Referenced to an isotropic radiator

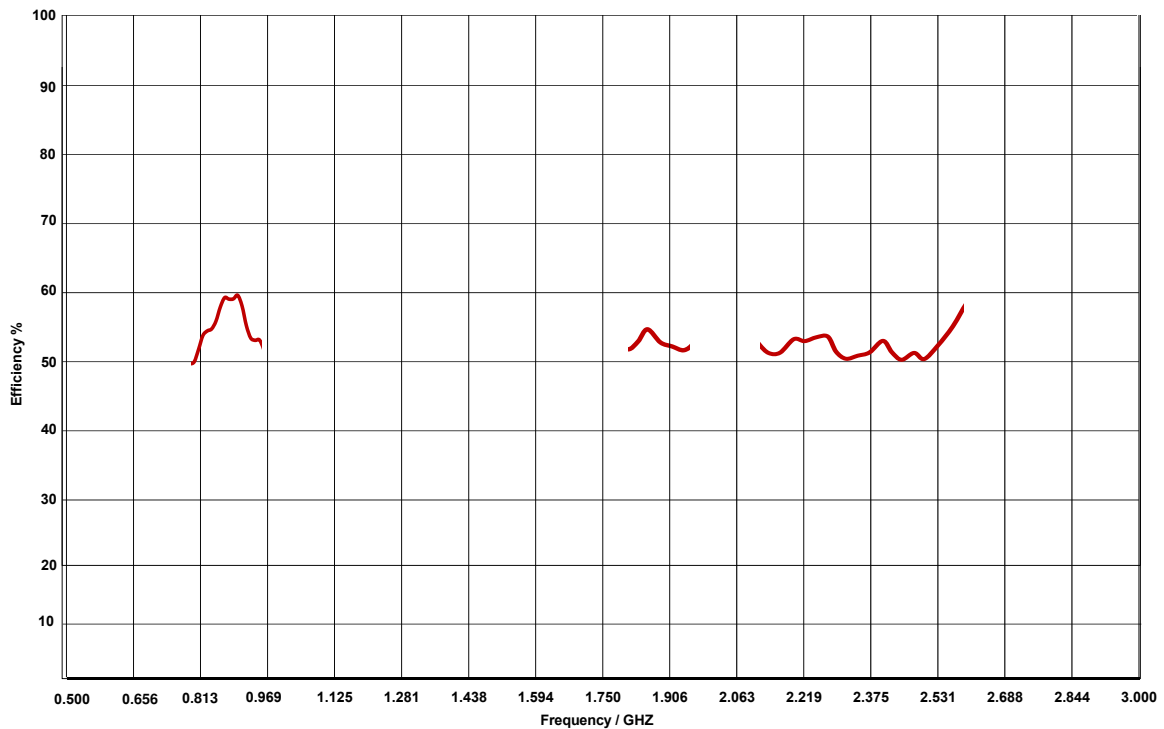
Product: QUADM0D-75-25

Product Order Code:
BM-02 RANGE

Typical VSWR Data



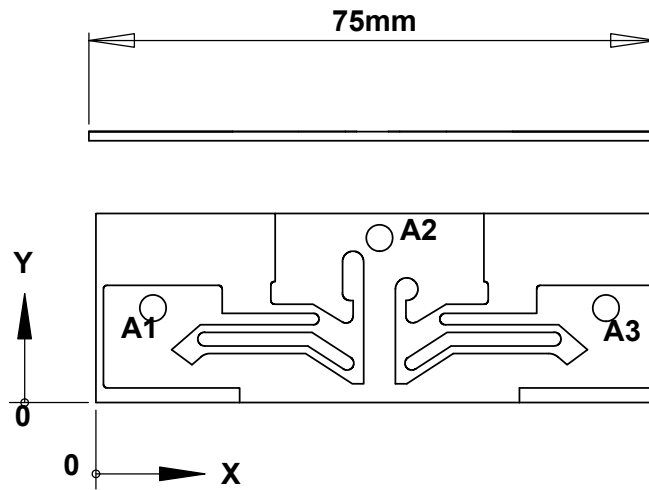
Radiated Efficiency



Product: QUADMOD-75-25

Product Order Code:
BM-02 RANGE

CAD Data



TAG	X LOC	Y LOC	SIZE
A1	7.55	12.50	∅ 3.50MM
A2	37.50	21.77	∅ 3.50MM
A3	67.45	12.50	∅ 3.50MM

